



Brunswick City Schools

Brunswick High School Design Reveal

October 29th, 2024



AGENDA

Welcome

**Project Overview &
Accomplishments**

**Construction
Process**

**High School Design
Reveal**

Next Steps

Organizations



+



**Facilities
Construction
Commission**



+



Project Team



Scott Alleman, RA
Project Manager



Ed Shearson, RA
Architect



Zora Pavlovic, RA
Architect



Jeanne Kleckner, NCDIQ
Interior Design



Cynthia Haight
Interior Design



Ryan Caswell
Communications and
Community Engagement

CONSTRUCTION TEAM



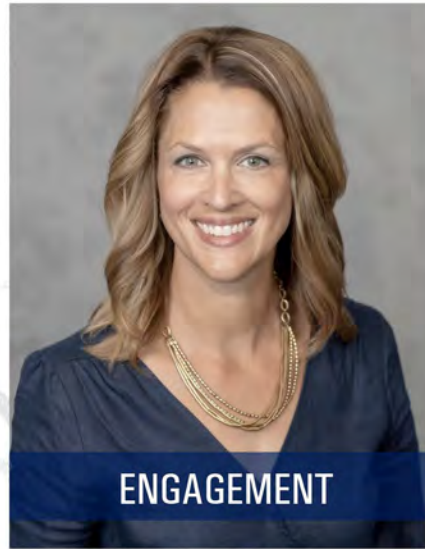
PROJECT EXECUTIVE

DERRICK SEMILIA



PROJECT MANAGER

ALEX GROSSMAN



ENGAGEMENT

KIM ADAMS



District Goals

1



Functional
Space

2



Best
Educational
Practices

3



On Time and
on Budget

4



Community
Engagement



PROJECT SCOPE

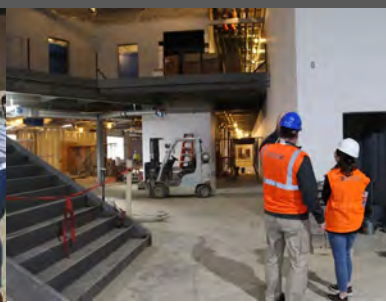
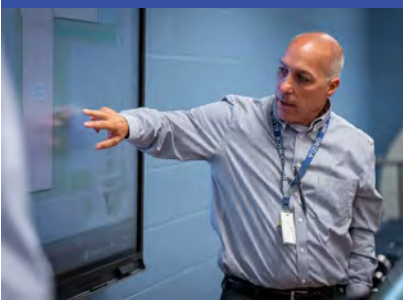
- Demolition of Towslee ES and Willetts MS
- Additions on Applewood and Kidder elementary schools
- New Board Offices and Maintenance Facility
- New High School Design and Construction

Project Schedule



DESIGN
FALL 2023 – FALL 2024

CONSTRUCTION
FALL 2024 – SUMMER 2027



Phases of Design

Programming (POR)

Information gathering and understanding educational goals

Schematic Design (SD)

Big picture organization, adjacencies, quantities, placement on site utilities and other large requirements

Design Development (DD)

Apply engineering, begin to discuss what happens inside spaces (door locations, casework, equipment, fixtures, etc.)

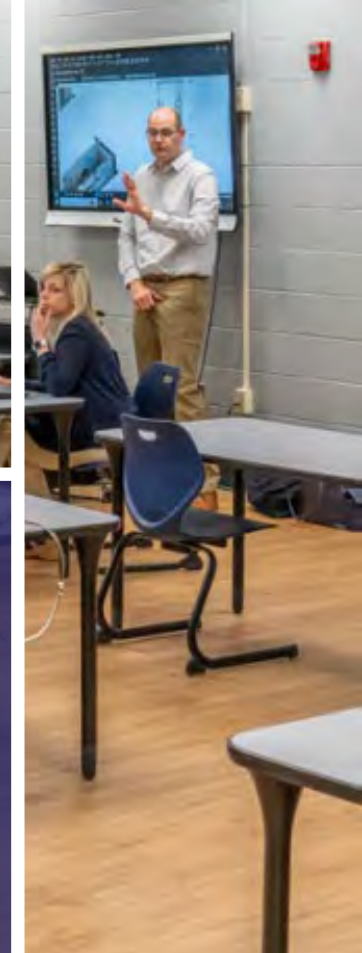
Construction Documents (CD)

Final documents used to bid construction

Bidding and Construction

Physical construction of new buildings





KIDDER ELEMENTARY SCHOOL

COMPLETE AUGUST 2024



New Parking Lot
& Driveway to
Grafton Road

APPLEWOOD ELEMENTARY SCHOOL

COMPLETE NOVEMBER 2024



New Parking Lot
& Driveway to
Laurel Road

BOE & MAINTENANCE BUILDINGS

COMPLETE AUGUST 2024



Willetts MS
Demolition
Complete

BOE & MAINTENANCE BUILDINGS

COMPLETE SUMMER 2026

Future Maintenance Facility

Future Board of Education Offices



Construction Timeline For All Projects

PROJECT	START	FINISH
Towslee Abate / Demo	February 2024	August 2024
New Brunswick High School	August 2024 (Early Site) Spring 2025 (Building)	Open for 2027-2028 School Year
Willets Abate / Demo	February 2024	August 2024
BOE / Maintenance Buildings	November 2024	Summer 2026
Kidder ES Site Improvements	June 2024	August 2024 (before school starts)
Applewood ES Site Improvements	August 2024	Thanksgiving 2024
Applewood & Kidder Additions	TBD	TBD



Facilities
Construction
Commission





Design Milestones

- Completed additional staff engagements with their input
- Community Visual Preference Exercise
- Schematic Design Review and Cost Estimates



Visual Preference Report

Participants:

- Students
- Administrator/Staff
- Alumni
- Parents
- Residents
- Other

Visual Preference Survey Results

DO YOU PREFER A MORE TRADITIONAL EXTERIOR AESTHETIC OR A CONTEMPORARY ONE?

Answered: 1,108 | Skipped: 11

Traditional



357 Responses (32.22%)

Contemporary



751 Responses (67.77%)



Traditional Notes:

- 72% of respondents felt that the traditional aesthetic appeared more like a "typical school" and would be easier to r
- Ma
- elic
- hig
- Sor
- Bru
- ma
- Ma
- anc

Contemporary Notes:

- 81% of respondents felt that a contemporary aesthetic was "future thinking" and better reflects where technology and

Visual Preference Survey Results

DO YOU PREFER INCORPORATING DISTRICT COLORS IN THE EXTERIOR OF THE BUILDING, OR LEAVING THEM OUT?

Answered: 1,111 | Skipped: 8

Incorporates District Colors



826 Responses (74.35%)



Leave District Colors Out



285 Responses (25.65%)

Incorporates District Colors Notes:

- 82% of respondents indicated that displaying Brunswick school colors contributed to morale and felt incorporating the colors on the exterior was important.
- 25% felt the white and blue color schemes were attractive and a way to help the building stand out.
- Respondents felt that using these colors in subtle ways was preferable to the entire school being white and blue.
- Many indicated that they associated school colors with Brunswick City and felt that using these colors demonstrated pride for your city and school.

Words Used: Pride, Brunswick, Spirit, Identity, Unique

Leave District Colors Out Notes:

- 63% of respondents felt that using masonry with a warmer palette would last longer and be easier to repair.
- Some felt that using school colors on the outside would fade over time and need to be replaced more frequently. This is why they favored leaving district colors out.
- 38% of respondents preferred the Middle School, with a masonry exterior with school colors on the interior.
- Many commented that they didn't prefer a "color saturated" exterior and felt that Brunswick blue would look dated years from now.

Words Used: Classic, Natural, Classier, Timeless

1,119
Participants

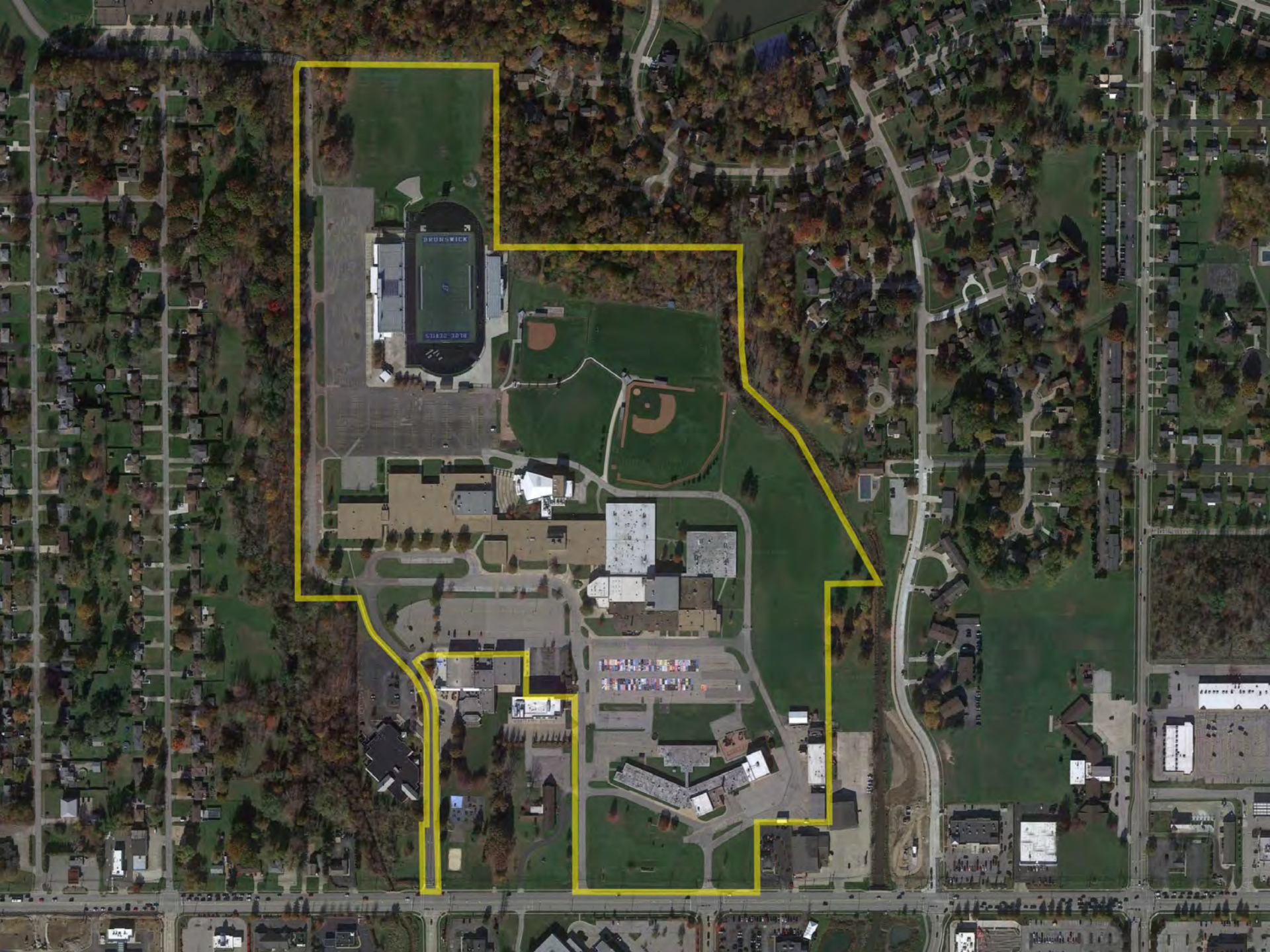
5/1/2024
Survey Launch

40 Days
Survey Window

Blue Devil Pride



High School Design Update





+

tda
thendesign architecture



Site Plan

NEW BRUNSWICK HIGH SCHOOL

FALL 2024

BRUNSWICK HS

Detention Basin

NEW HS BUILDING PAD

HAMMOND



NEW BRUNSWICK HIGH SCHOOL

SPRING 2025 – FALL 2027

BRUNSWICK HS

NEW HS BUILDING

HAMMOND



NEW BRUNSWICK HIGH SCHOOL

SUMMER 2027 – FALL 2027



FIRST DAY OF SCHOOL

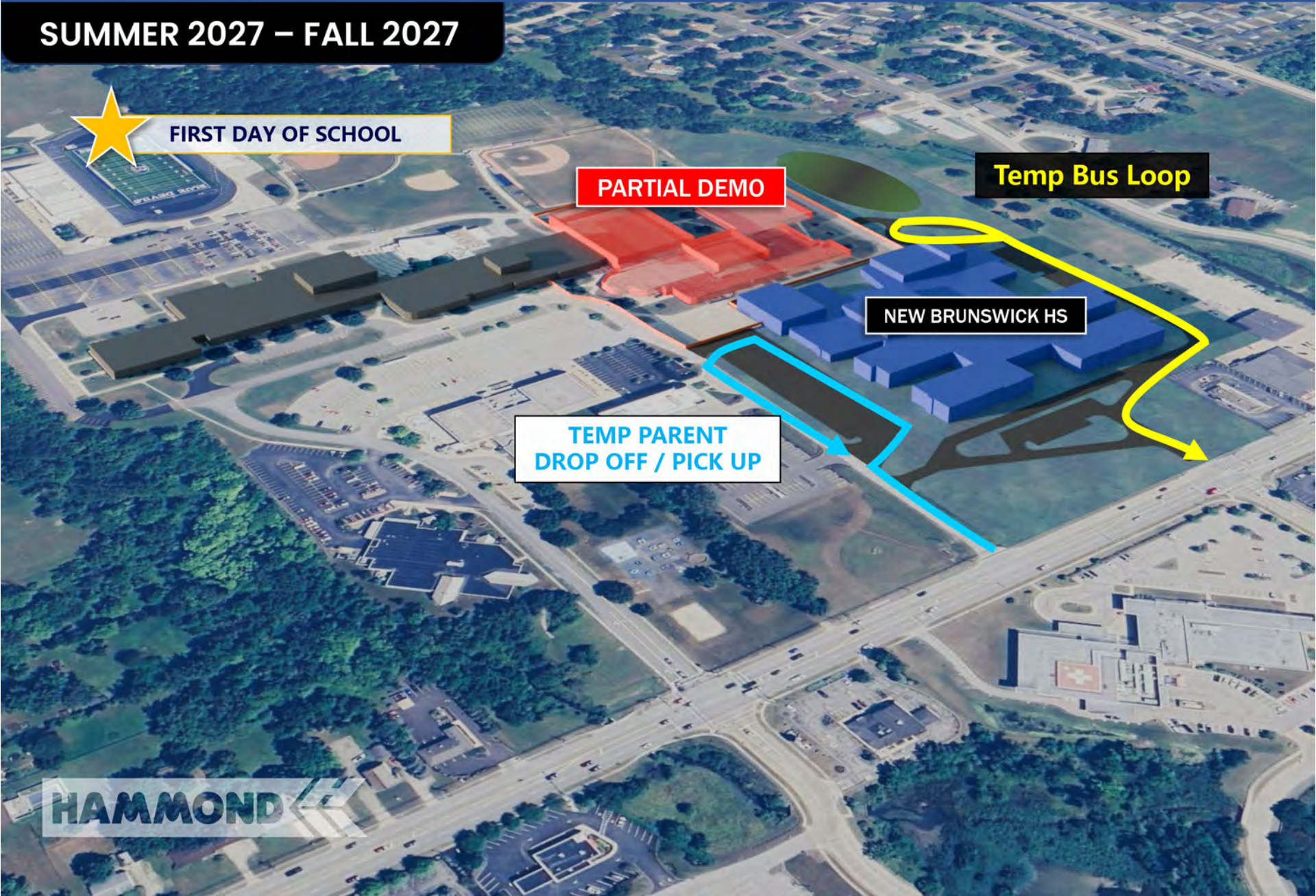
PARTIAL DEMO

Temp Bus Loop

NEW BRUNSWICK HS

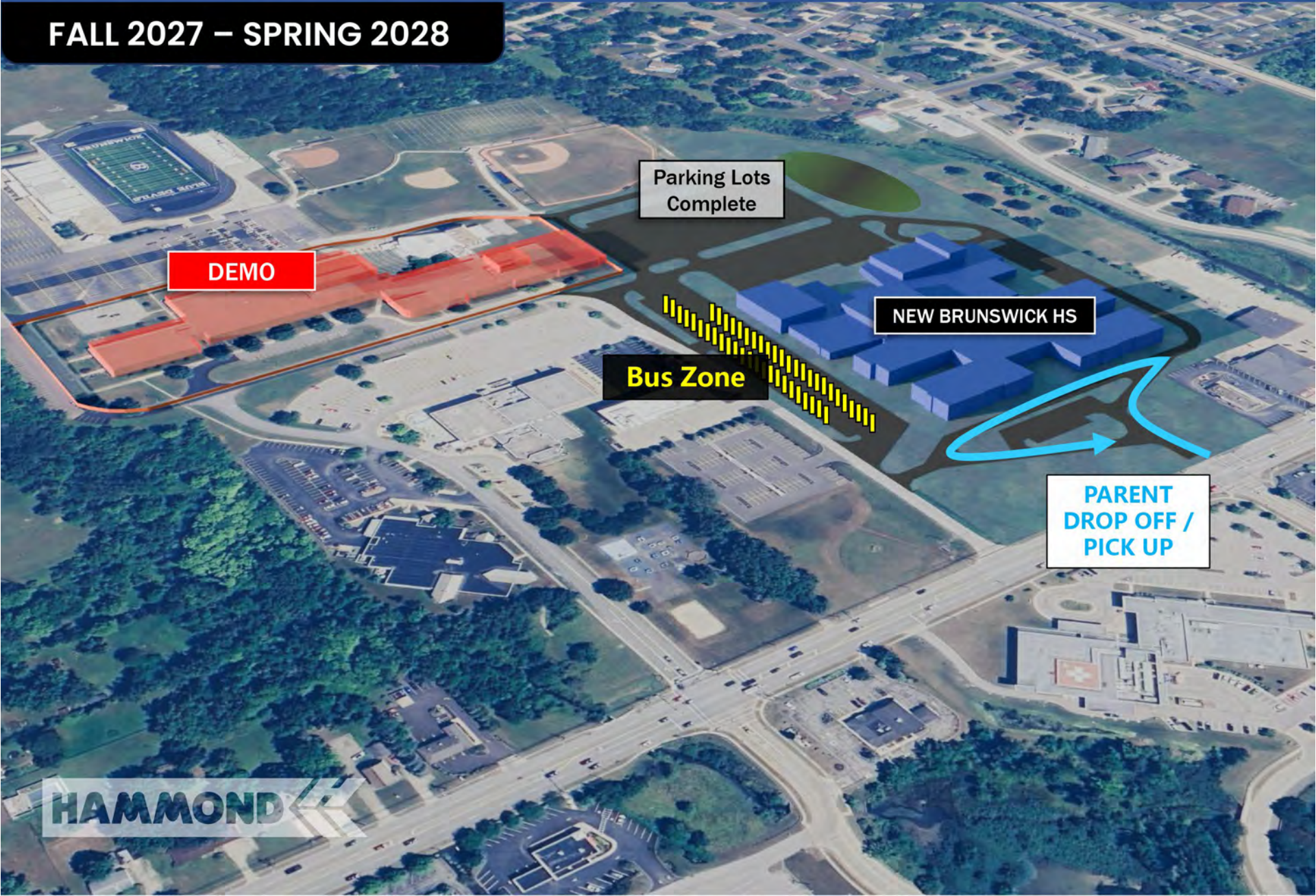
TEMP PARENT
DROP OFF / PICK UP

HAMMOND



NEW BRUNSWICK HIGH SCHOOL

FALL 2027 – SPRING 2028



DEMO

Parking Lots Complete

NEW BRUNSWICK HS

Bus Zone

PARENT DROP OFF / PICK UP

HAMMOND

NEW BRUNSWICK HIGH SCHOOL

SUMMER 2028



Tennis Courts

Multipurpose Field

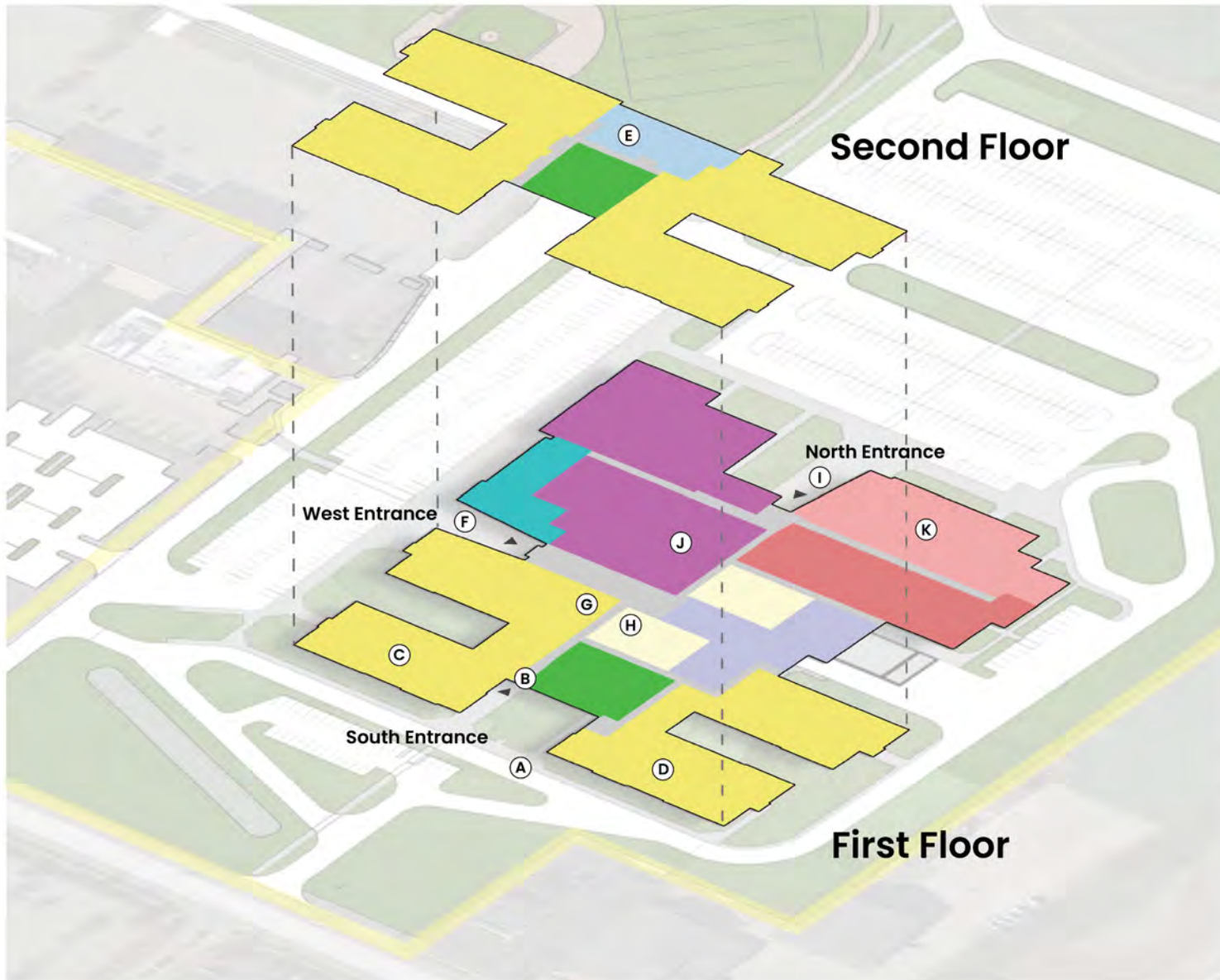
NEW BRUNSWICK HS

HAMMOND 



High School Design Reveal

High School Layout



Legend

- Academic Core
- Student Services
- Athletics
- Art
- Student Center
- Circulation
- Student Dining
- Food Service
- Music
- Performing Arts

Points of Interest

- (A) South Entrance
- (B) South Lobby
- (C) Classroom
- (D) Science Classroom
- (E) Student Center
- (F) West Entrance
- (G) Student Collaborative
- (H) Student Dining
- (I) North Entrance
- (J) Competition Gym
- (K) Performing Arts Center



Student Walkthrough

Brunswick High School

Brunswick

SENIOR HIGH SCHOOL



Brunswick Design Reveal Video:



https://youtu.be/YNsqBu20N20?si=bOHoQ68lfrvc_Pm

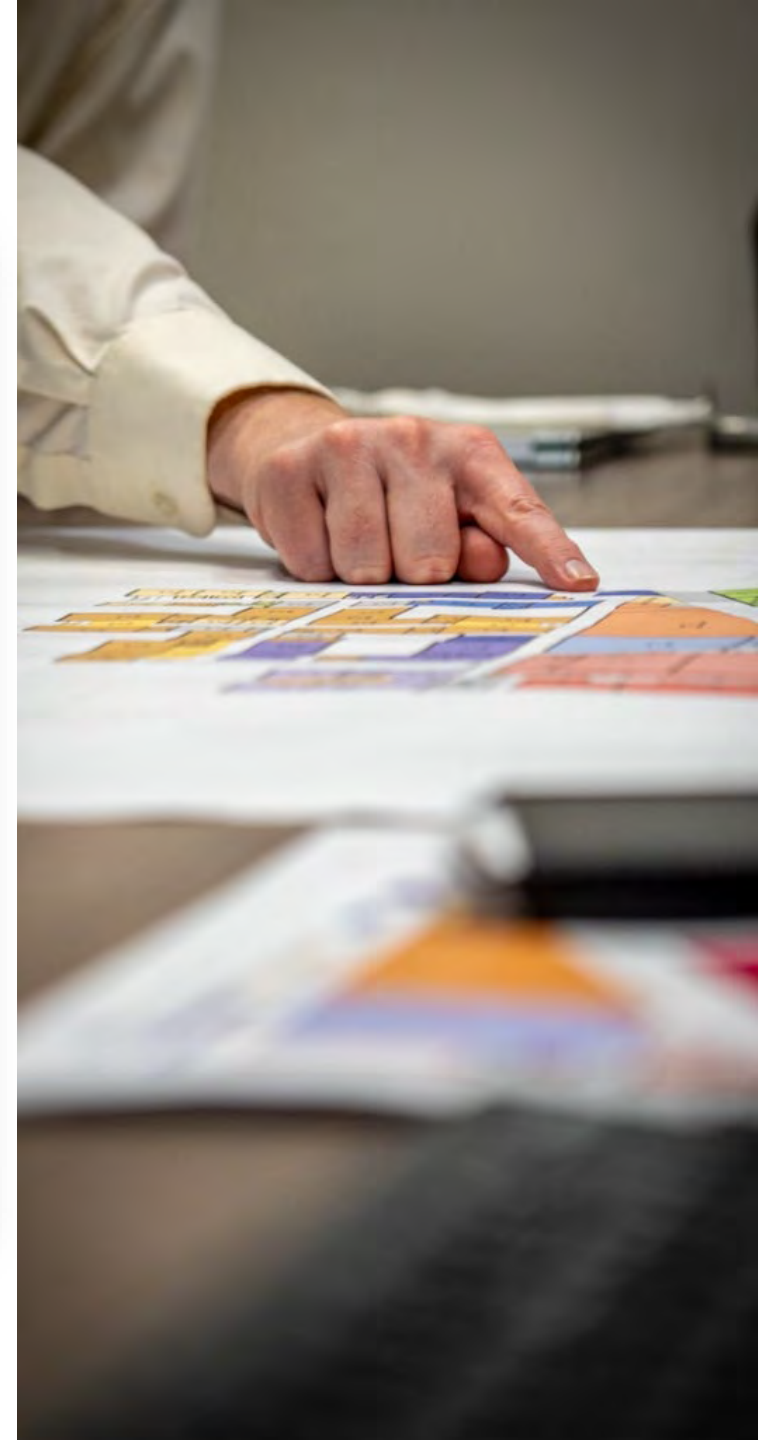
Construction Project Website



Click on "BCSD BHS Construction Project" on "About Us"



Click on "Addition to our Website" to visit the construction website



Thank you for your participation!