



# **NORTH RIDGEVILLE CITY SCHOOLS**

New High School Project + Transportation Facility

## **Community Night Update**

September 25, 2024



# AGENDA

## **Introductions**

## **Completed Work**

- Gathering and incorporating feedback

## **High School Design**

- Project Scope
- School Layout

## **Construction Impact**

- Project Timeline
- Site Phasing

## **Next Steps**

# Project Team



Architect

+



School District

+



Construction-Manager-at-Risk

# The Project Team



Claire Bank, AIA NCARB  
Project Manager



Yamilet Fleming, RA  
Project Architect



Emma Cek  
Designer



Stirling Hunter  
Designer



Evi Harakal  
Designer



Ryan Caswell  
Communications Lead



# PRE-CONSTRUCTION TEAM



PROJECT EXECUTIVE

**BILL SCHURMAN**



PRECON MANAGER

**JOE KILLION**



ENGAGEMENT

**KIM ADAMS**





**K-12 Expertise**



**\$3.3 BILLION**

SCHOOL CONSTRUCTION



**110+**  
Employees



**Depth of Staff**



**LOCALLY OWNED &  
OPERATED**



# RELEVANT EXPERIENCE



APS GARFIELD HIGH SCHOOL



APS ELLET HIGH SCHOOL



BRUNSWICK MIDDLE SCHOOL



NORTH ROYALTON HS



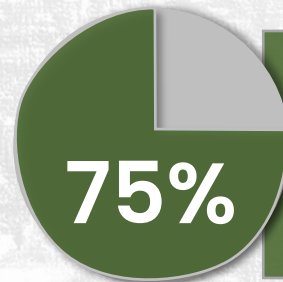
CUYAHOGA FALLS MS/HS



NORTH OLMSTED MS/HS



**26**  
HIGH  
SCHOOLS



**75%**

**Hammond**  
projects are built  
on occupied sites

# PURPOSES FOR THE NEW SCHOOL

Providing the best educational environment for future learners



## Safety

- Install the latest security and safety measures that are crucial in today's educational environments
- Eliminate trailers at the high school.
- Provide access to disadvantaged students and ADA access to guests
- Replace aging facilities that are difficult to secure, monitor and maintain
- Provide better community access in a safe and controlled environment



## Space

- Construct a new high school to accommodate critical space needs for the current student population
- Reduces and streamlines class sizes
- Eliminate costly, aging and wasteful infrastructure
- The buildings will fill an immediate, and future need as the community grows
- Provide additional community spaces



## Excellence

- Provide a modern educational environment to better prepare students for their future
- Students have access to flexible, collaborative spaces, modern technology and support areas
- The new school enables more opportunities for new programs in academics, the arts and athletics



# What Does Excellence Mean?

Where is the district headed?

## Excellence

- **“Collegiate Environment”** spaces that promote student autonomy
- **“Future Thinking”** spaces that are adaptable 20 years from now
- **“Collaborative”** a design that encourages student interaction with each other
- **“Relationships”** a school that fosters partnerships with business and community initiatives



+



+



# AGENDA

## Introductions

### Completed Work

- Gathering and incorporating feedback

### High School Design

- Project Scope
- School Layout

### Construction Impact

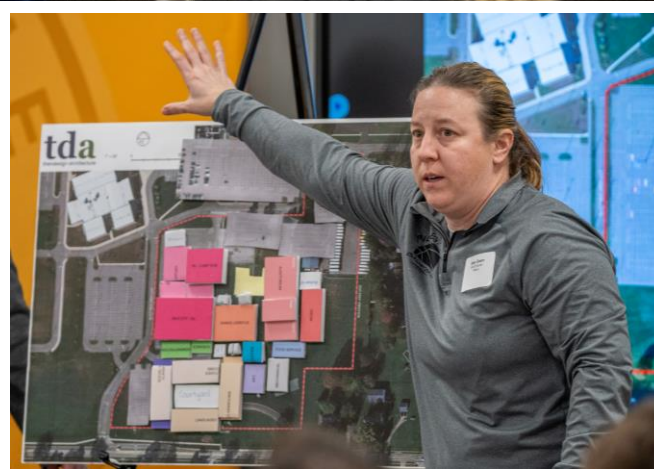
- Project Timeline
- Site Phasing

### Next Steps



# Educational Visioning

Engaging a variety of stakeholders in the design process





# Design Team Meetings

Incorporating Feedback During the Process





# Staff Feedback

Departmental and Construction Leadership Team Meetings





# Visual Preference

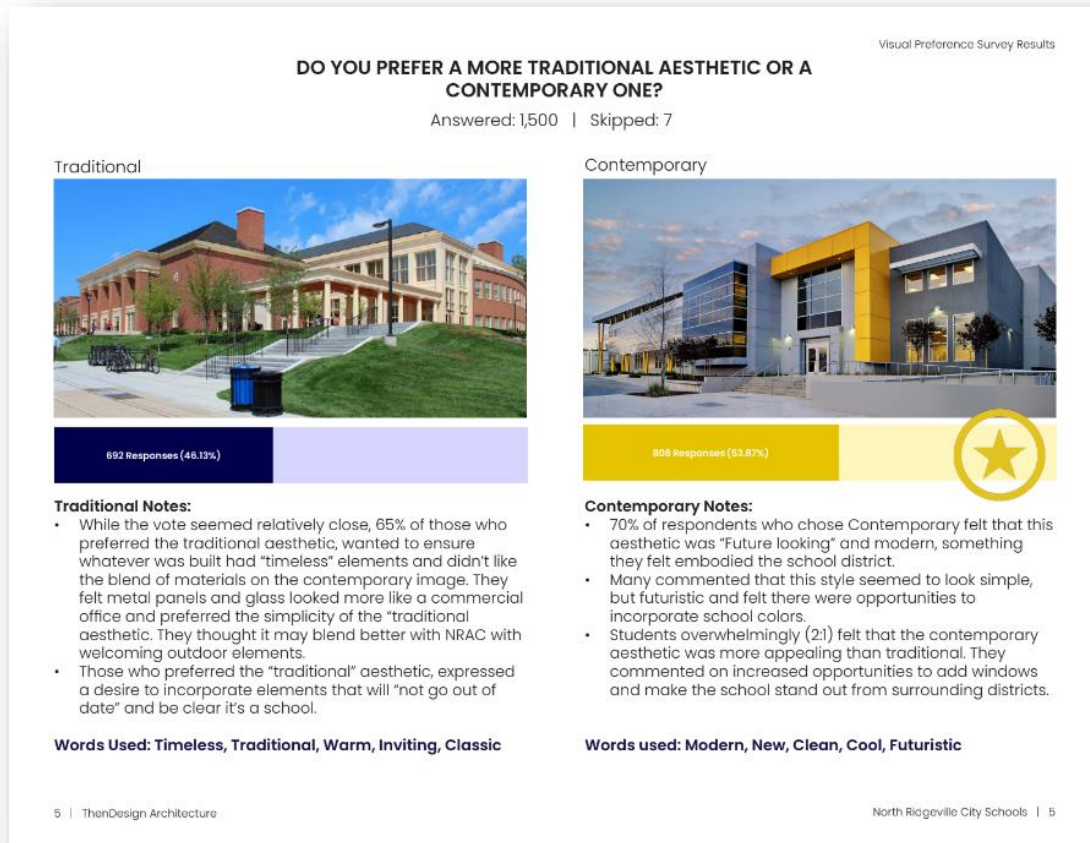
Community Providing Feedback on Exterior Design





# Visual Preference

## Community Providing Feedback on Exterior Design



The feedback from this survey will be incorporated into the design process to help guide the exterior aesthetic of the new high school.

**1,508**  
Participants

**4/10/2024**  
Survey Launch

**23 Days**  
Survey Window

- A transition from middle school to a high school environment
- Aspects of a "Timeless Design"
- A Statement Entry
- An overhang/covering for the Student Entry
- Exterior Textures

# Project Process

We Are Here



North Ridgeville City Schools  
Community Night





# Preliminary Site Layout

NEW TRANSPORTATION FACILITY (PROPOSED)

3-4

NRAC

5-8

RANGERS

existing high school footprint

NEW PRACTICE FIELDS

NEW PARKING

NEW PARKING

NEW PARKING

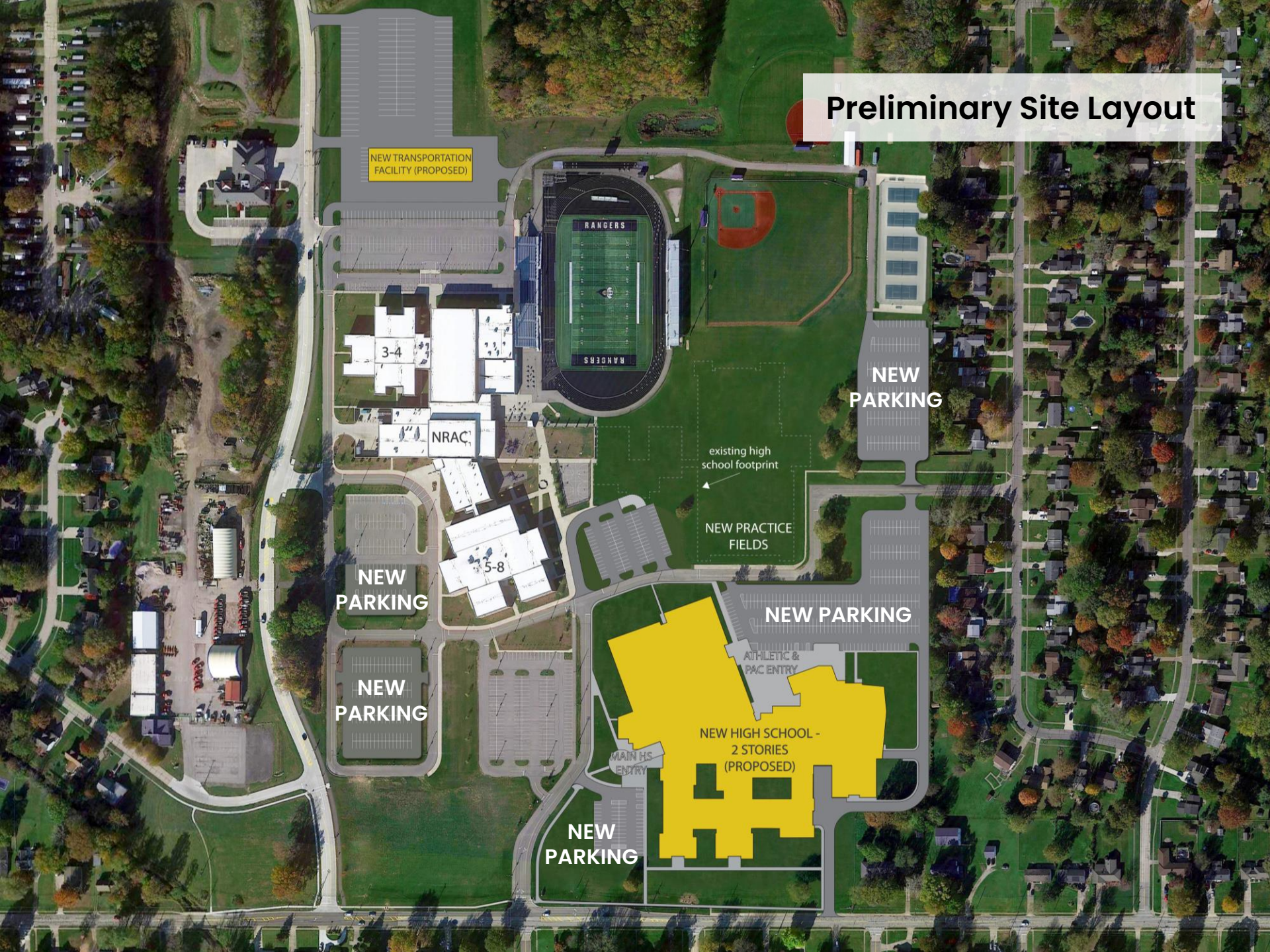
NEW PARKING

ATHLETIC & PAC ENTRY

NEW HIGH SCHOOL - 2 STORIES (PROPOSED)

MAIN HS ENTRY

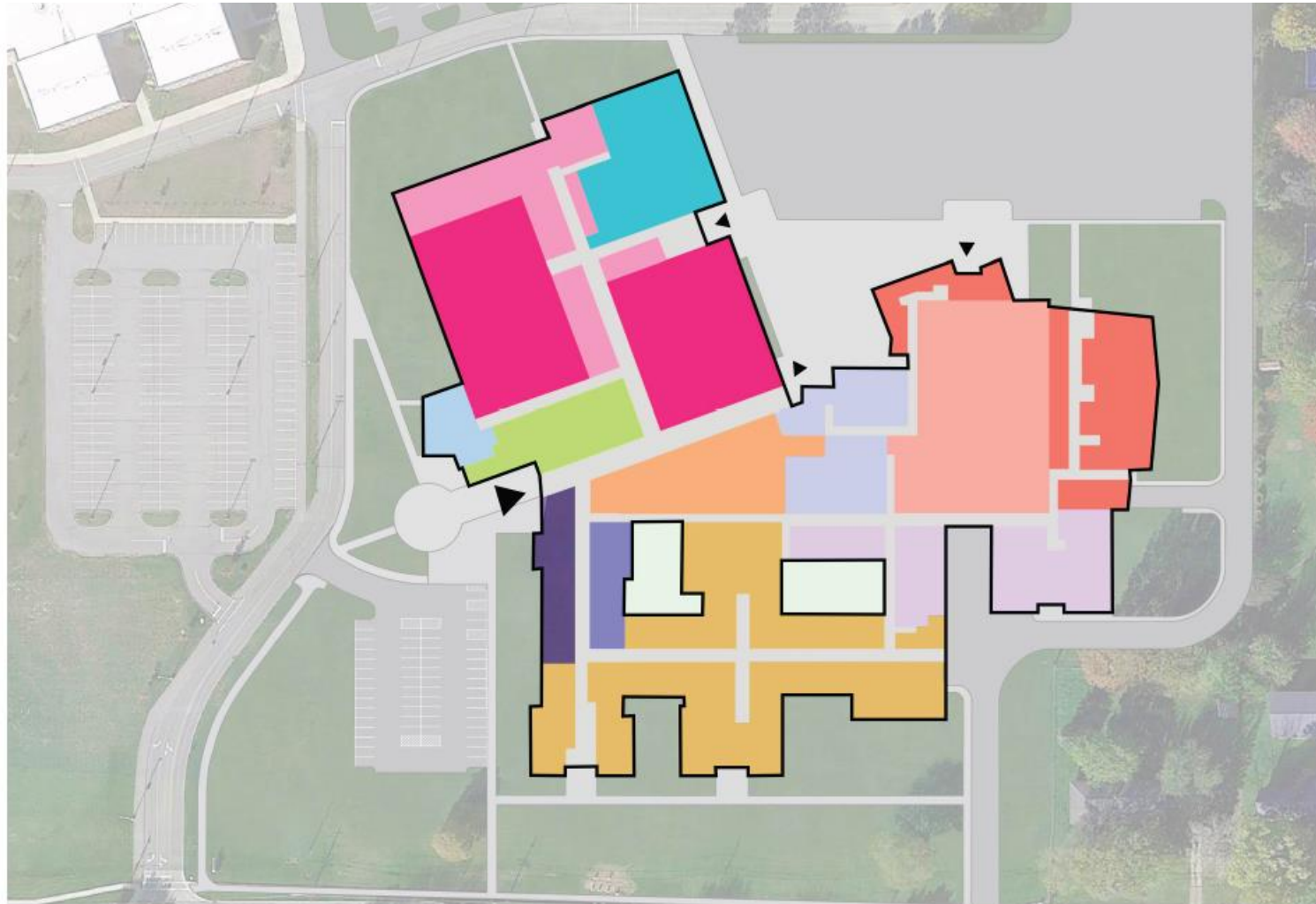
NEW PARKING





# First Floor Diagram

North Ridgeville High School



## Legend

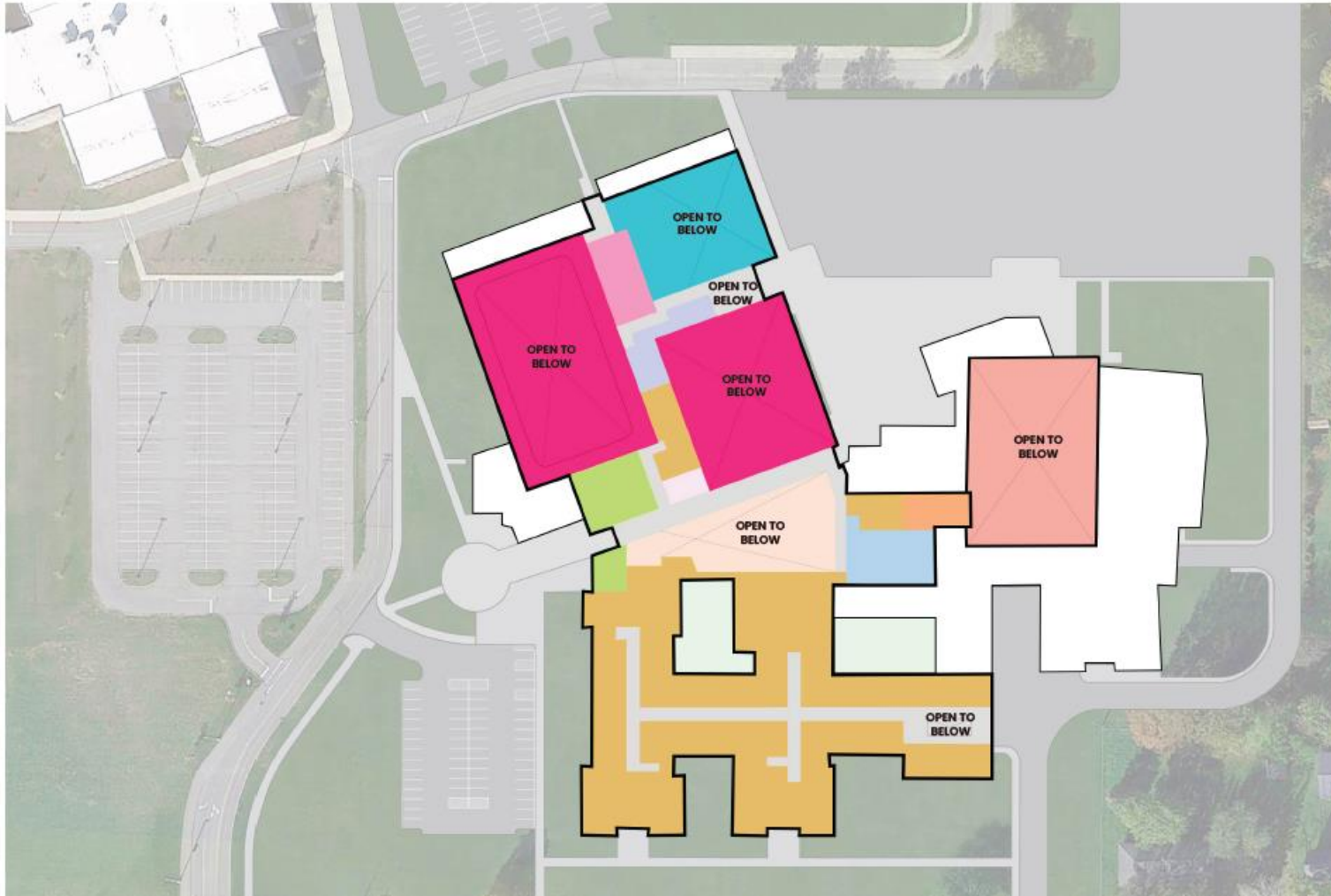
-  Gymnasium
-  Athletics
-  Natatorium
-  Meeting Space
-  Administration
-  Student Dining
-  Kitchen + Mechanical
-  Family Consumer Science
-  School Store + Business
-  Academic Space
-  Auditorium
-  Music
-  Art + Career Tech
-  Courtyard

North Ridgeville City Schools  
Community Night



# Second Floor Diagram

North Ridgeville High School



## Legend

-  Gymnasium
-  Athletics
-  Natatorium
-  Administration
-  Staff Dining
-  Academic Space
-  Auditorium
-  Courtyard
-  Mechanical
-  Media Center

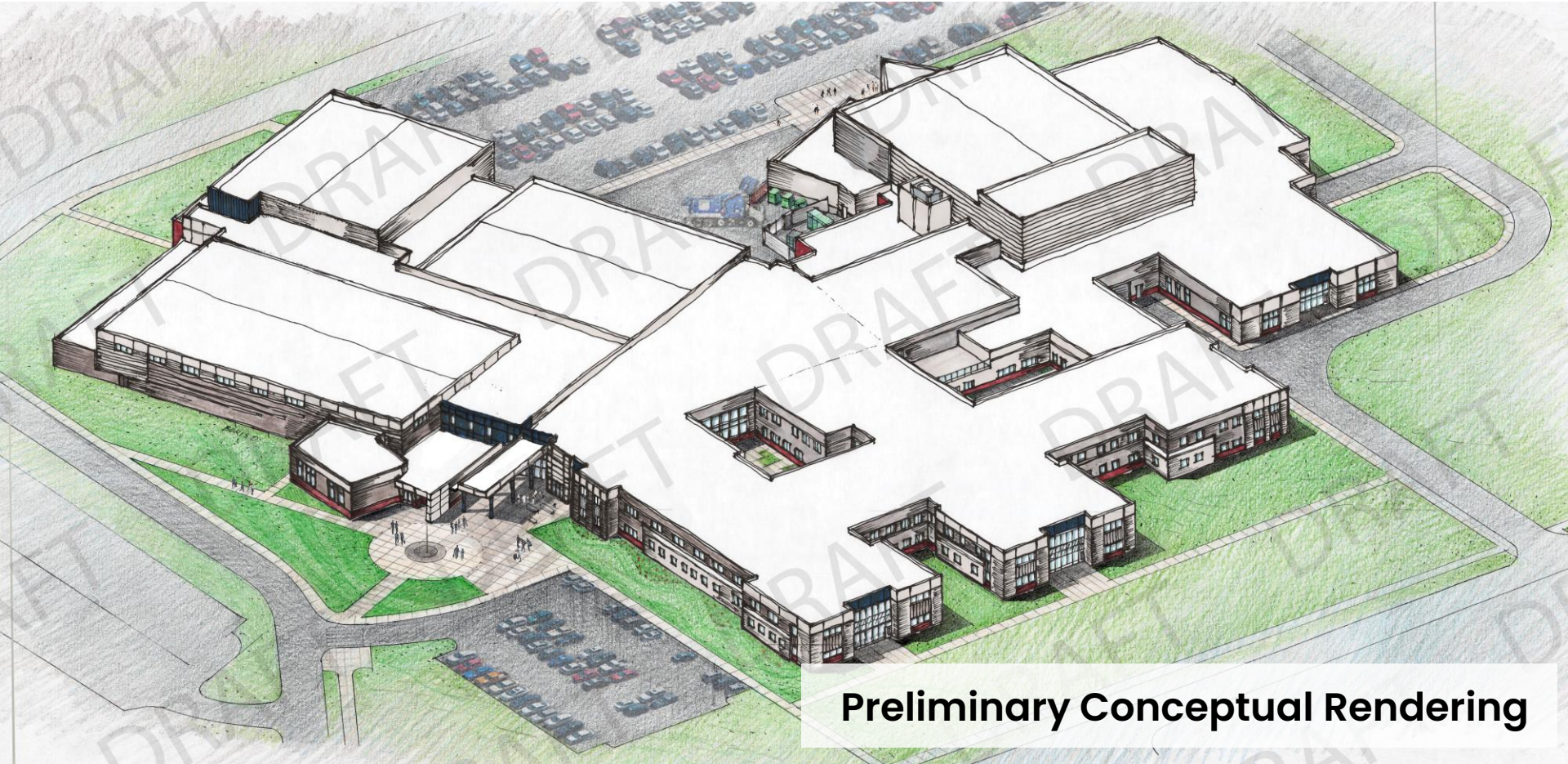
North Ridgeville City Schools  
Community Night





# Southwest Exterior Axonometric

North Ridgeville High School



**Preliminary Conceptual Rendering**

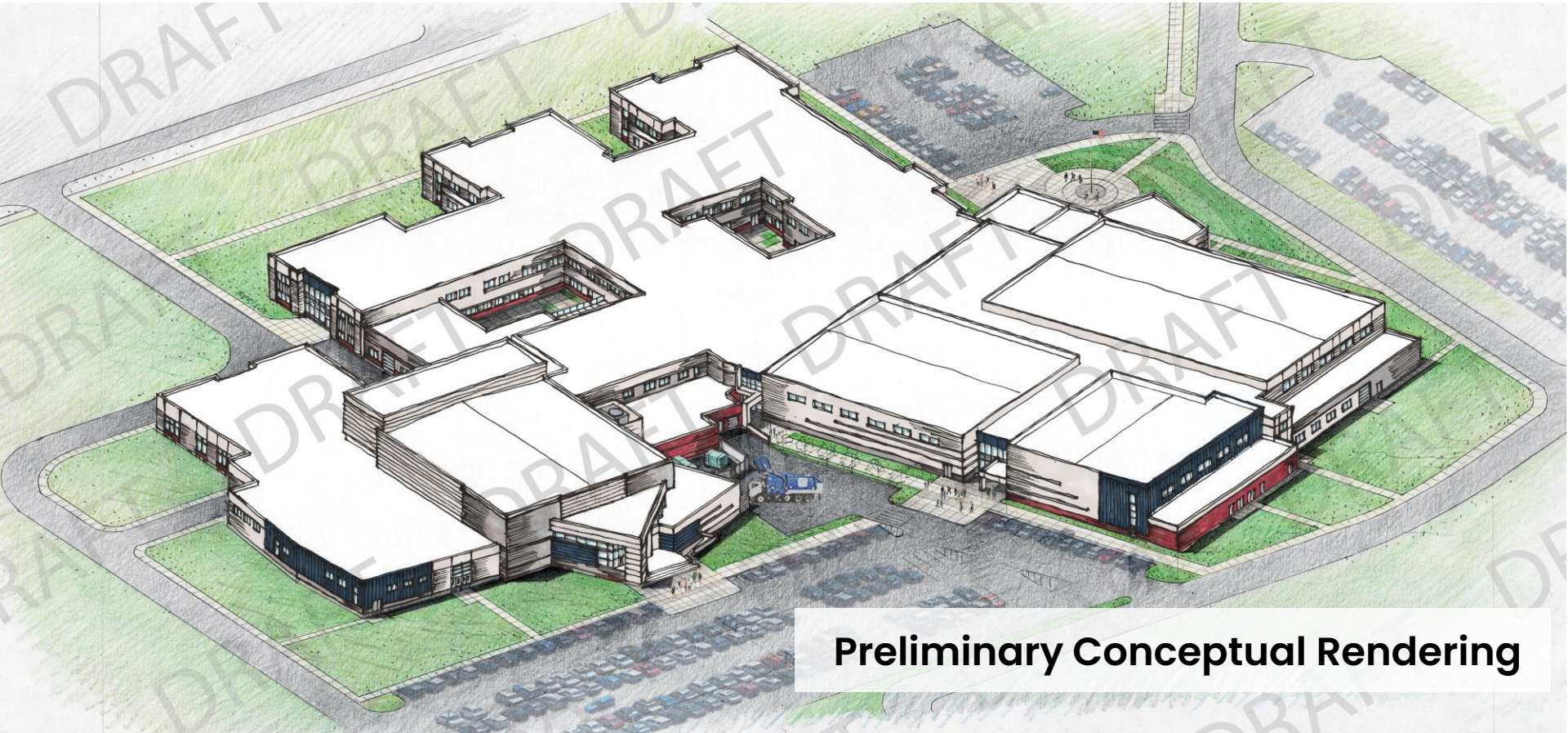
North Ridgeville City Schools  
Community Night





# Northeast Exterior Axonometric

North Ridgeville High School



Preliminary Conceptual Rendering

North Ridgeville City Schools  
Community Night





# Primary Entrance

North Ridgeville High School

Preliminary Conceptual Rendering



North Ridgeville City Schools  
Community Night





# Performing Arts Center Entrance

North Ridgeville High School

Preliminary Conceptual Rendering



North Ridgeville City Schools  
Community Night





# AGENDA

## Introductions

## Completed Work

- Gathering and incorporating feedback

## High School Design

- Project Scope
- School Layout

## Construction Impact

- Project Timeline
- Site Phasing

## Next Steps

# TIMELINE: BUILDING PROGRAM



2025

2026

2027

2028

EARLY SITE

HS BUILDING CONSTRUCTION

DEMO HS

TRANSPORTATION

★ Transportation Opens  
January 2026

★ High School Opens  
2028-29 SY



# TIMELINE: FALL 2024



ACADEMIC  
CENTER

NRHS

T/M

RANGER WAY

BAINBRIDGE RD





# TIMELINE: MARCH 2025



CONSTRUCTION ZONE

ACADEMIC CENTER

NRHS

T/M

RANGER WAY

BAINBRIDGE RD





# TIMELINE: SUMMER 2025



CONSTRUCTION ZONE

ACADEMIC CENTER

NRHS

T/M

NEW PARKING LOTS

CONSTRUCTION ZONE (EARLY SITE WORK)

RANGER WAY

BAINBRIDGE RD



# TIMELINE: FALL 2025



CONSTRUCTION ZONE

ACADEMIC CENTER

NRHS

T/M

NEW PARKING LOTS

CONSTRUCTION ZONE (EARLY SITE WORK)

RANGER WAY

BAINBRIDGE RD



# TIMELINE: WINTER 2025-2026



★ TRANSPORTATION CENTER OPENS

ACADEMIC CENTER

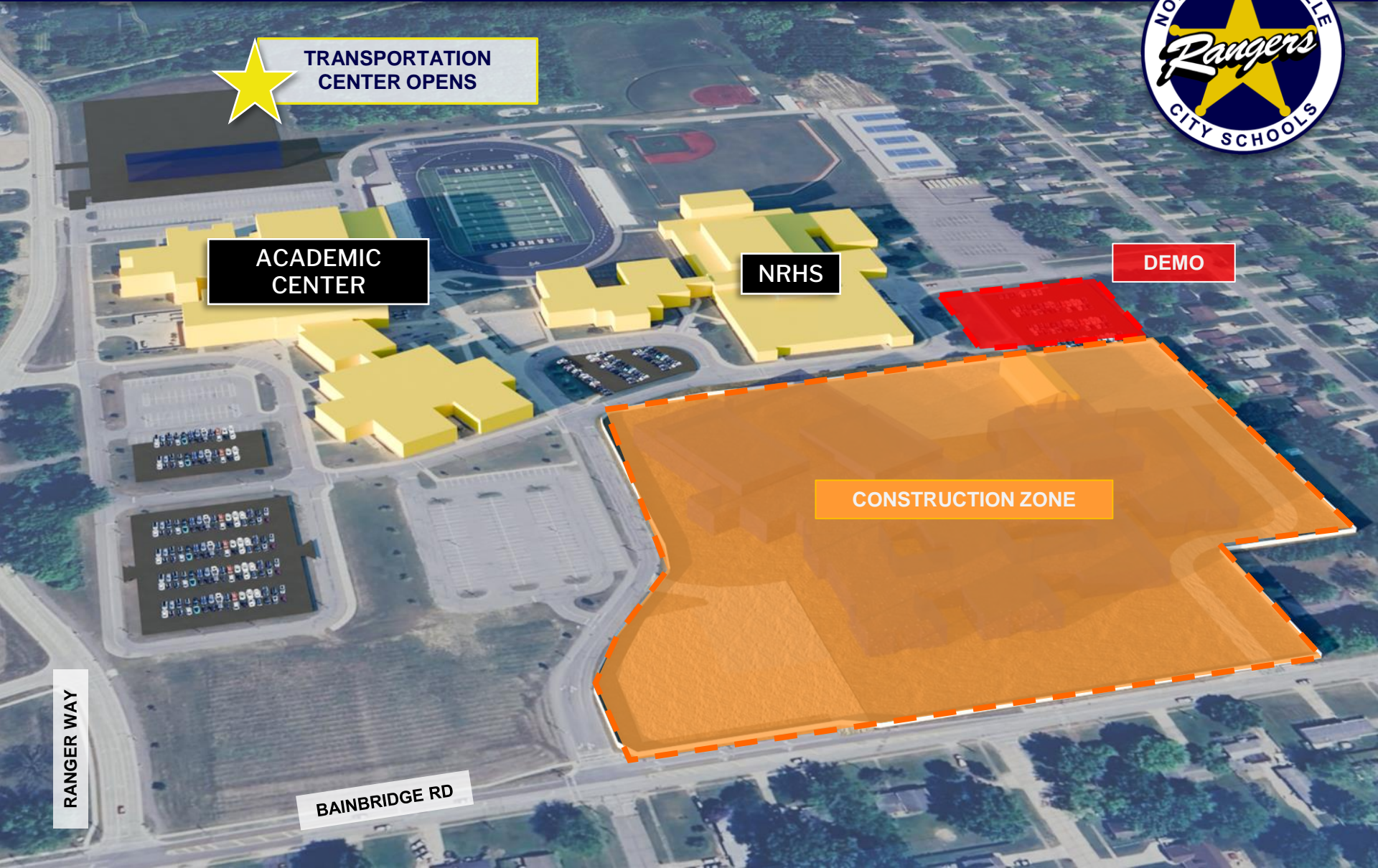
NRHS

DEMO

CONSTRUCTION ZONE

RANGER WAY

BAINBRIDGE RD





# TIMELINE: SPRING 2026 – SPRING 2028



ACADEMIC CENTER

NRHS

OFFICE

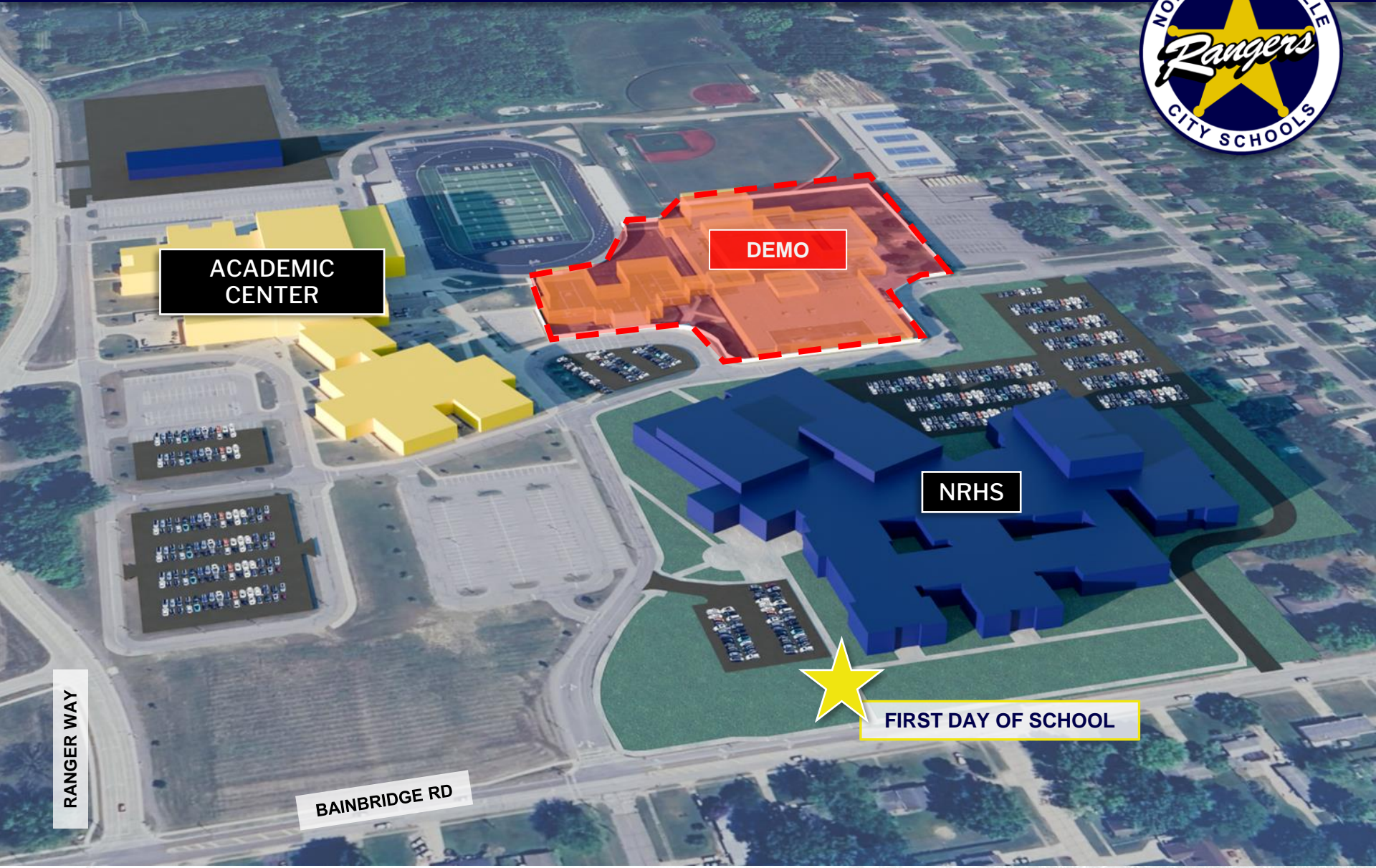
CONSTRUCTION ZONE

RANGER WAY

BAINBRIDGE RD



# TIMELINE: START OF 2028-29 SY



ACADEMIC CENTER

DEMO

NRHS

FIRST DAY OF SCHOOL

RANGER WAY

BAINBRIDGE RD



# TIMELINE: FALL 2028



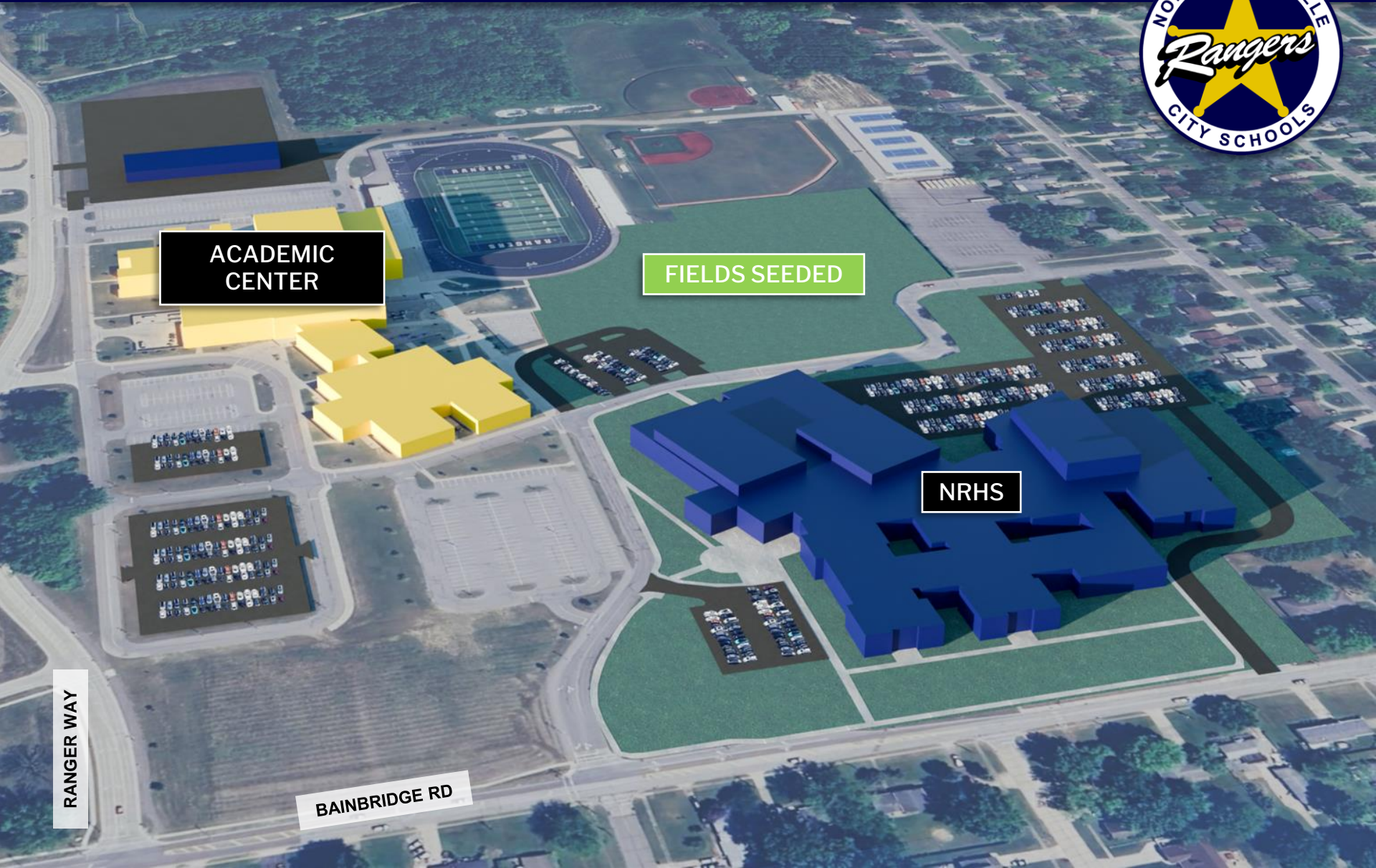
ACADEMIC CENTER

FIELDS SEEDED

NRHS

RANGER WAY

BAINBRIDGE RD





# ENGAGEMENT OPPORTUNITIES

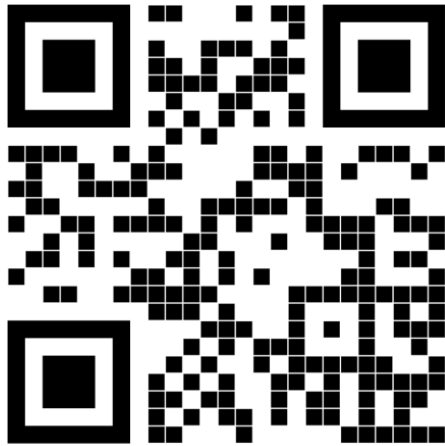
- Digital Communications
- Groundbreaking Event
- Beam Signing
- Student & Staff Engagements
- Construction Tours
- Staff Tours
- Community Meetings
- Neighbor Meetings
- Grand Opening Event



# Connect with us!

...do you want to  
review or share this  
information?

Visit the North  
Ridgeville  
Construction Project  
Website



North Ridgeville City Schools  
Community Night







## Next Steps

- Continue refining the HS design
- Transportation and Maintenance Center Design Completion
- In the spring, get teams on board to start site prep for the summer.
- The spring community meeting will include more information about the interior